

Cross Country Sewer Easement
Recovery
Town of Merrimack
Wastewater Treatment Facility

Jim Taylor, Assistant Director of Public Works
Ken Conaty, Sewer Inspector

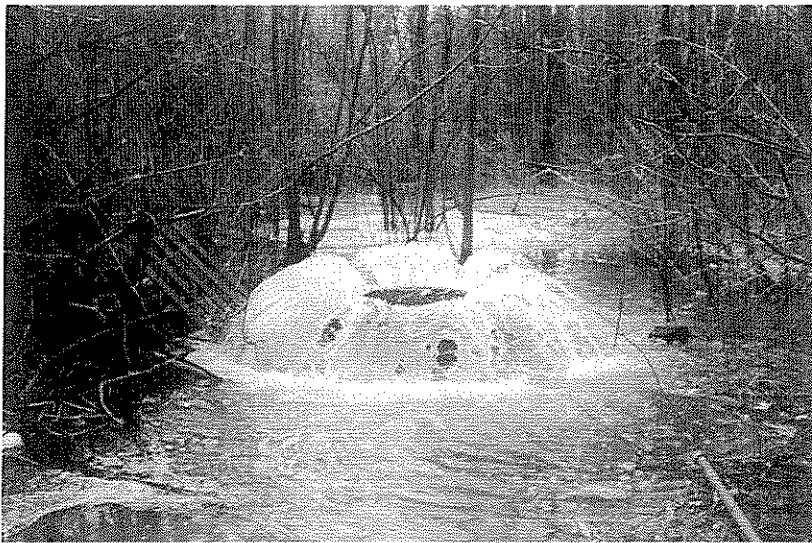
Introduction

- When the Town's EPA discharge permit was reissued in 2005, new sewer system management and maintenance requirements were included
- This program is known as CMOM (Capacity, Management, Operations, and Maintenance)
- Under the CMOM program the Town is required to identify, clean, and inspect *all* of the sewer pipes and manholes in Town
- Treatment plant staff has been busy cleaning and assessing the condition of the accessible portion of the system

CMOM Goals

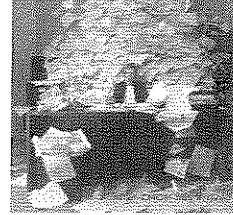
- Provide uninterrupted, reliable and cost effective service to residents, business, commercial enterprises, and industry
- Provide a logical and cost effective road map of where we are today and where we are going in the future
- Meet permit requirements (prevent Sanitary Sewer Overflows-SSO's)

SSO





NPDES PERMIT



The permittee, must:

- properly manage, operate and maintain, at all times, all parts of collection system;
- provide adequate capacity to convey base flows and peak flows;
- take all feasible steps to stop, and mitigate the impact of, sanitary sewer overflows in portions of the collection system; and
- provide notification to parties with a reasonable potential for exposure to pollutants associated with the overflow event.
- develop a written summary of your CMOM program and make it, and the audit, available to any member of the public upon request.

EPA Enforcement

EPA proposes \$157,500 in fines for Keene

◆Penalties: Agency cites violation of clean water laws; city says it's been working on complying.

By STEPHEN SEITZ
Union Leader Correspondent
KEENE — The U.S. Environmental Protection Agency is proposing fines of up to \$157,500 against the city for violating federal clean water laws at its wastewater treatment plant and in its sewer collection system.

The proposed penalties stem from an administrative order issued back in September requiring the city to set a schedule for complying with the Clean Water Act. Assistant Director of Public Works Dorra Hanscom said she thought that's what the city had been doing.

"EPA's statement makes it sound as though we weren't doing anything," said Hanscom. "We commissioned a sewer infrastructure study in 2001, and we've been working on sewer rehabilitation since 1990. There was no sense of urgency about the administrative order."

Specifically, the city was required to develop and adopt a plan to remove structural deficiencies; evaluate manholes

and collection system access bins; put in place a plan to restore the capacity of its sewer system, including a prevent the maintenance program; prepare a report analyzing appropriate effluent limits for local industries that discharge to the system, and to put appropriate local limits for industries into its sewer ordinance.

»See Keene, Page



U.S. Environmental Protection Agency

Region 1: New England

Recent Actions | Contact Us | Print Version

EPA Home > EPA Newsroom > Billerica, Mass. Will Pay \$250,000 for Clean Water...

EPA NE Home
A-Z Index
Topics

Billerica, Mass. Will Pay \$250,000 for Clean Water Act Violations

Release date: 05/31/2007

EPA SSO Enforcement Actions

Community	Type of Violations	Penalty
Branford, CT	Dry & Wet Weather SSOs	\$300,000
Greenwich, CT	Dry & Wet Weather SSOs associated with blockages and structural integrity issues	\$285,000
Waterbury, CT	Dry weather maintenance-related SSOs	\$350,000
Hartford MDC *	Wet & Dry weather SSOs	\$850,000
Winchendon, MA	Wet Weather SSOs + Effluent Violations	\$ 45,000

Collection System

- The Town currently owns approximately 90 miles of sewer lines ranging in size from 8" diameter pipe to 48", 1,500 manholes, and six pumping stations
- Approximately 11 miles of this total is cross country or 12%, i.e. the pipes are typically located on private property and not in Town streets and thus are not easily accessible
- Six miles of this total is the main interceptor that runs north to south along the railroad tracks.

Cross Country Easement Recovery Program

- In Phase 1, we hired a surveyor to survey the easements and do a deed search on each property. This Phase was completed in 2010. Each permanent easement is 20' wide
- Phase II involves clearing the easements that have overgrown
- Phase III will clean, video, and asses the condition of manholes and pipes

Phase II Details

- Currently out to bid with an RFP to select a qualified land clearing company
- Anticipate company selection, contract signing and purchase order issued prior to the end of June
- Project will be done over a three year period to allow us to monitor activities, address issues as they arise, and determine if the selected contractor is performing as expected
- Phase II was approved in this fiscal years budget (FY 12-13)

Phase II Implementation

- Notify land owners and abutters of project by letter-June
- Meet with land owners to discuss details of project and discuss any access issues
- Issues: Fences, trees, sheds, etc. on easements
- Project to start in November when leaves are down and ground is firm and dry
- Permits to work in wetlands may be needed

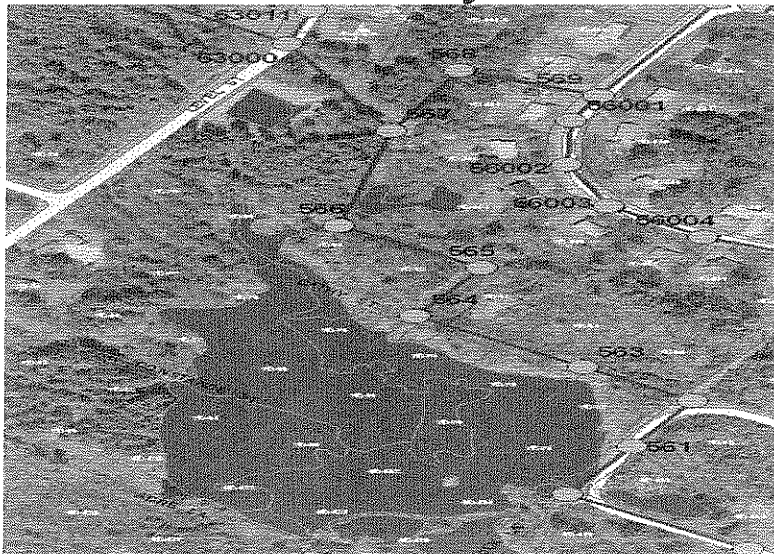
Projects (15)

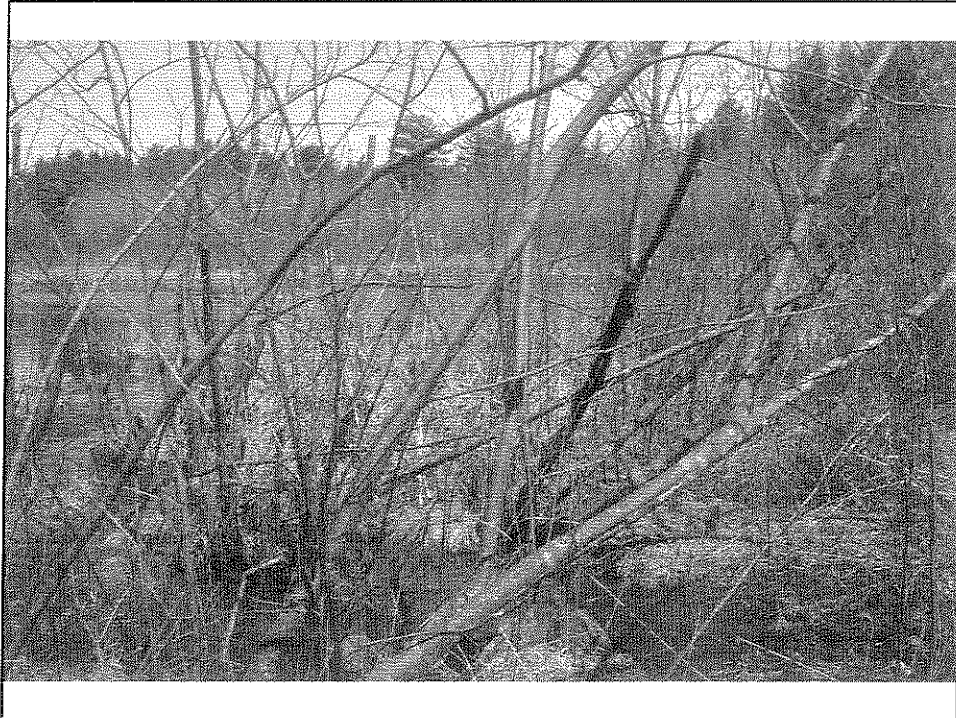
- Interceptor to DW Highway
- Back River Rd to Belmont Rd.
- Constance St. to Windover Ln.
- Bedford Rd. to Ministerial Dr.
- Baboosic Brook to Ministerial Dr.
- Interceptor to Front St.
- Interceptor to McGaw Bridge Rd.
- Jessica Dr. to Turkey Hill Rd.
- Conifer St. to Edwards Ln and T. Hill
- Hemlock St. to Souhegan River
- Olympic Village to Turkey Hill Rd.
- Bigwood Dr. to Executive Park Dr.
- Island Dr. to Thorntons Ferry P.S.
- Lorraine Rd. to Christina Dr.
- Joey Rd. to Naticook Rd.
-

Projects For 2013 (feet)

▪ Constance St. to Level St.	3,026'
▪ Interceptor to McGaw Bridge Rd.	2,129'
▪ Lorraine Rd. to Christina Dr.	1,828'
▪ Joey Rd. to Naticook Rd.	1,182'
▪ TOTAL	8,165'

Level to Cathy Streets





Conclusions

- Good business practice to maintain and evaluate collection system
- Multi year project to define, clear, and then evaluate all cross country sewer lines
- Phase II should take 3 years to complete
- Continue to fund this project in future years until complete