



March 18, 2015

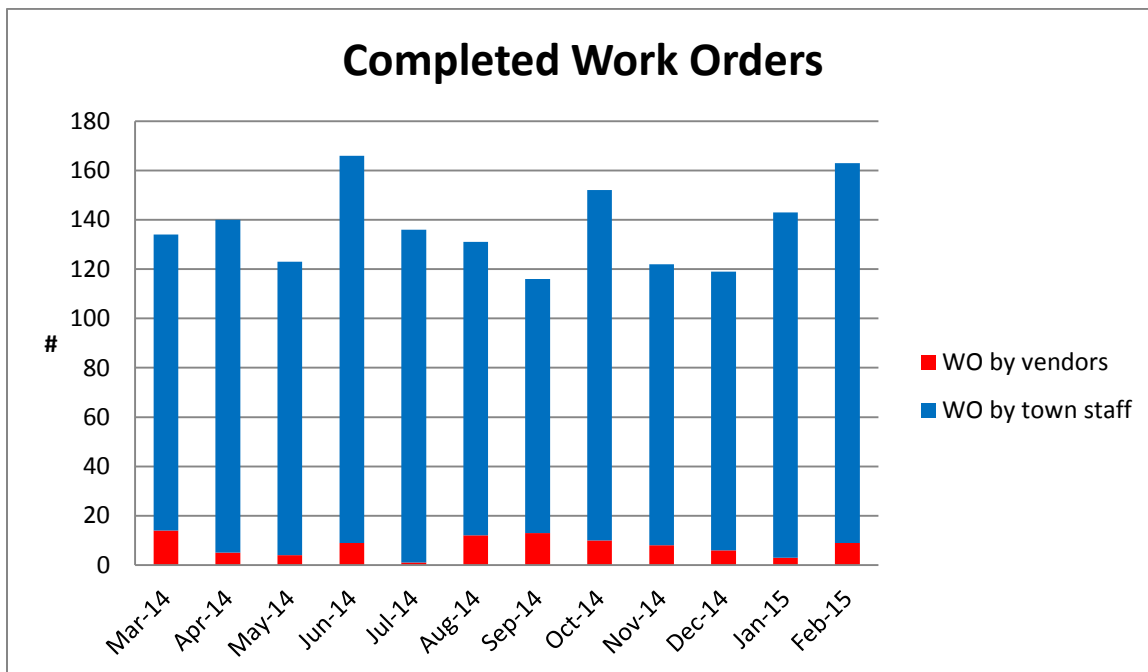
**TO: Rick Seymour, Public Works Director**  
**FROM: Adam Jacobs, Operations Manager**

**RE: EQUIPMENT MAINTENANCE AND HIGHWAY DIVISION MONTHLY REPORTS FOR FEBRUARY 2015**

The following is an overview of the activities performed by Equipment Maintenance and Highway Divisions of the Merrimack Public Works Department:

**Equipment Maintenance Division**

- Completed 42 corrective maintenance repair orders and road service calls on Town vehicles, including:
  - Repaired alternator on Fire engine E-3
  - Replaced muffler and assembly for Highway loader H-16
  - Replaced wing plow cylinder and hoses for Highway truck H-28
  - Replaced cutting edge for Solid Waste loader L-5
- Performed 104 preventive maintenance work orders
- Performed 8 state inspections
- Issued 9 repair orders to outside entities, including:
  - Electrical system diagnosis and repair for Fire engine E-4
  - Replace throttle body for Fire utility truck U-1
  - Replaced hydraulic generator for fire engine E-1
  - Replaced bearing and rebuilt clutch for Highway chipper trailer

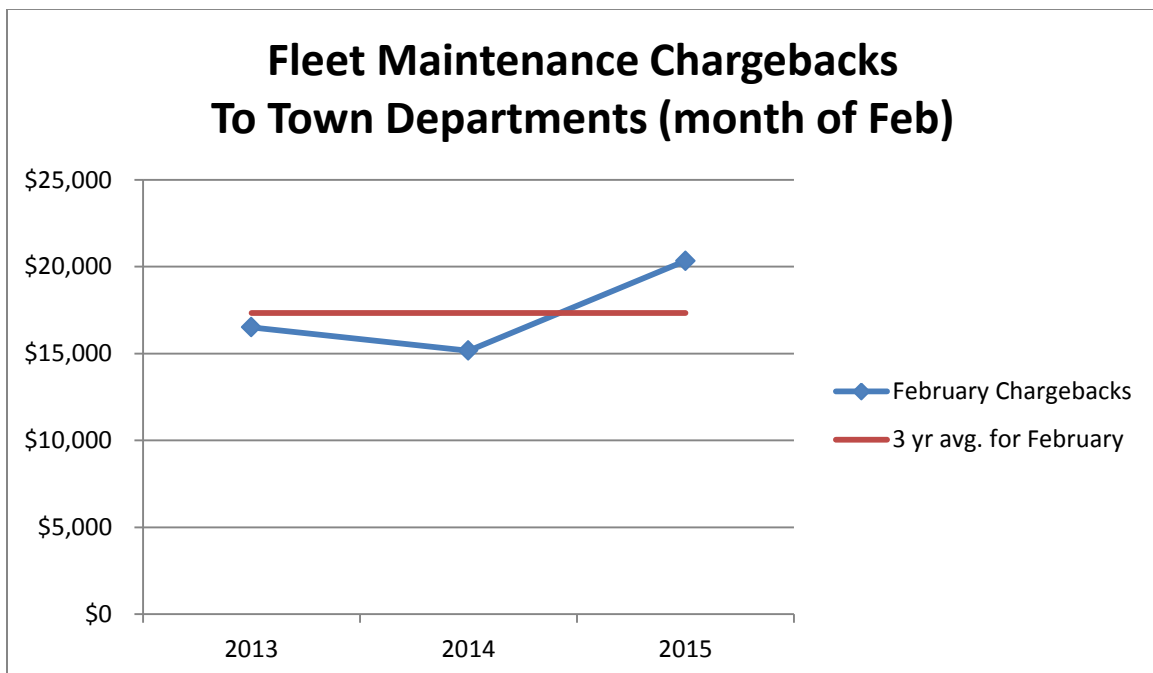
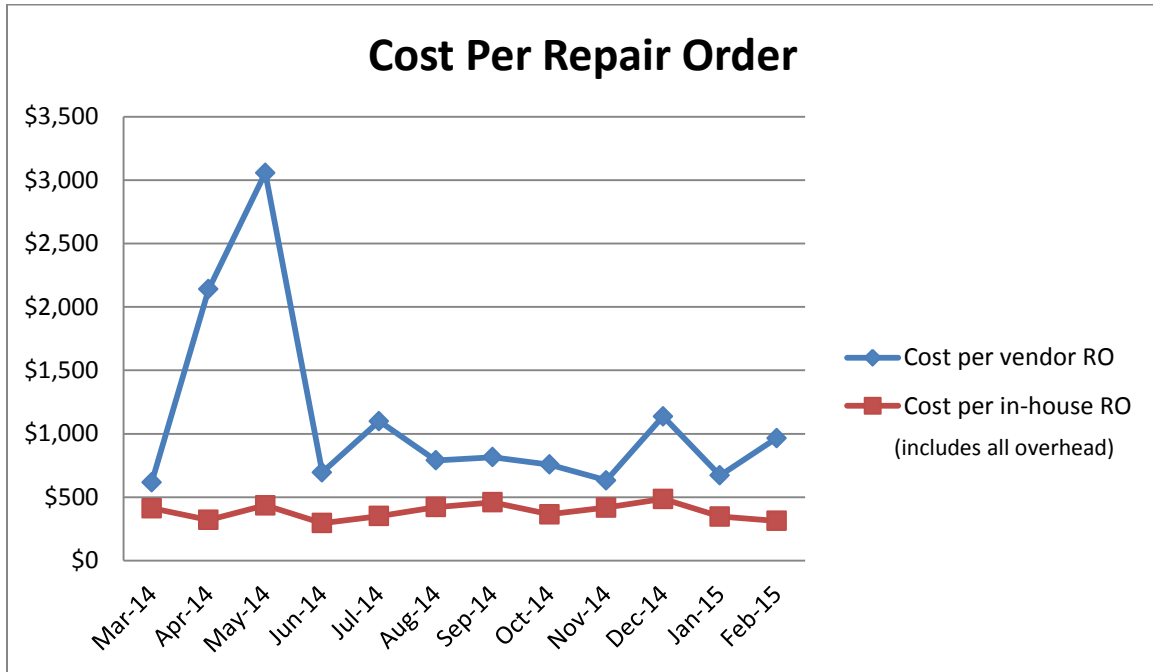


Monthly report  
Equipment Maintenance & Highway Divisions



March 18, 2015

**Equipment Maintenance Division, continued**





March 18, 2015

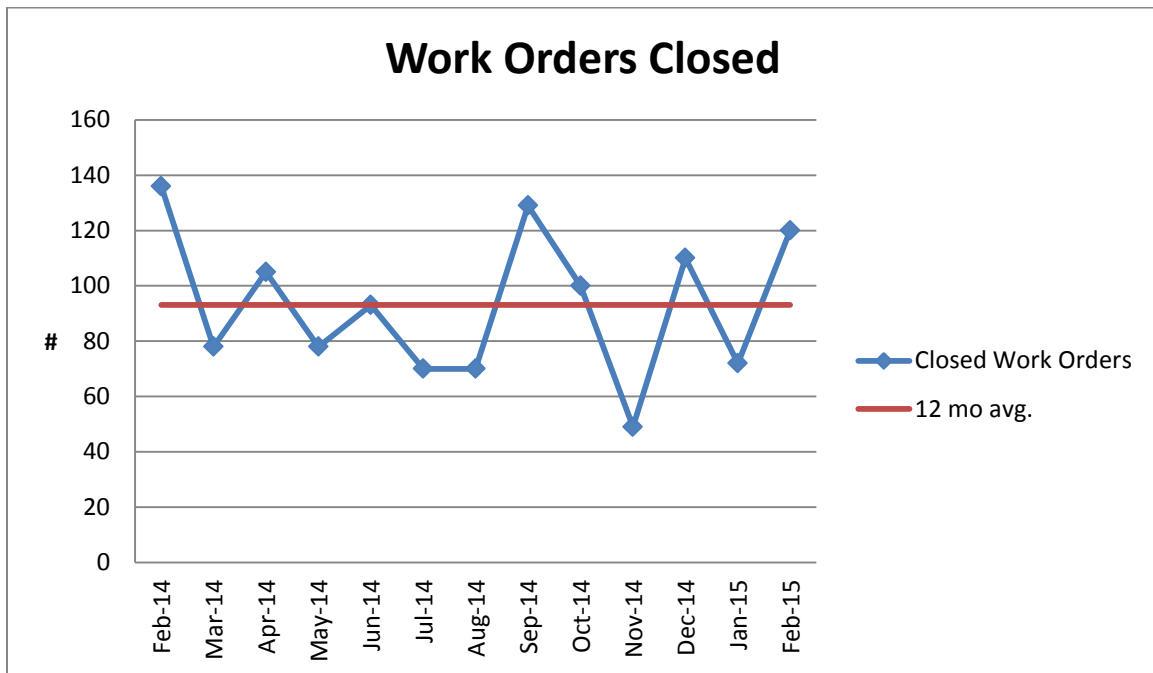
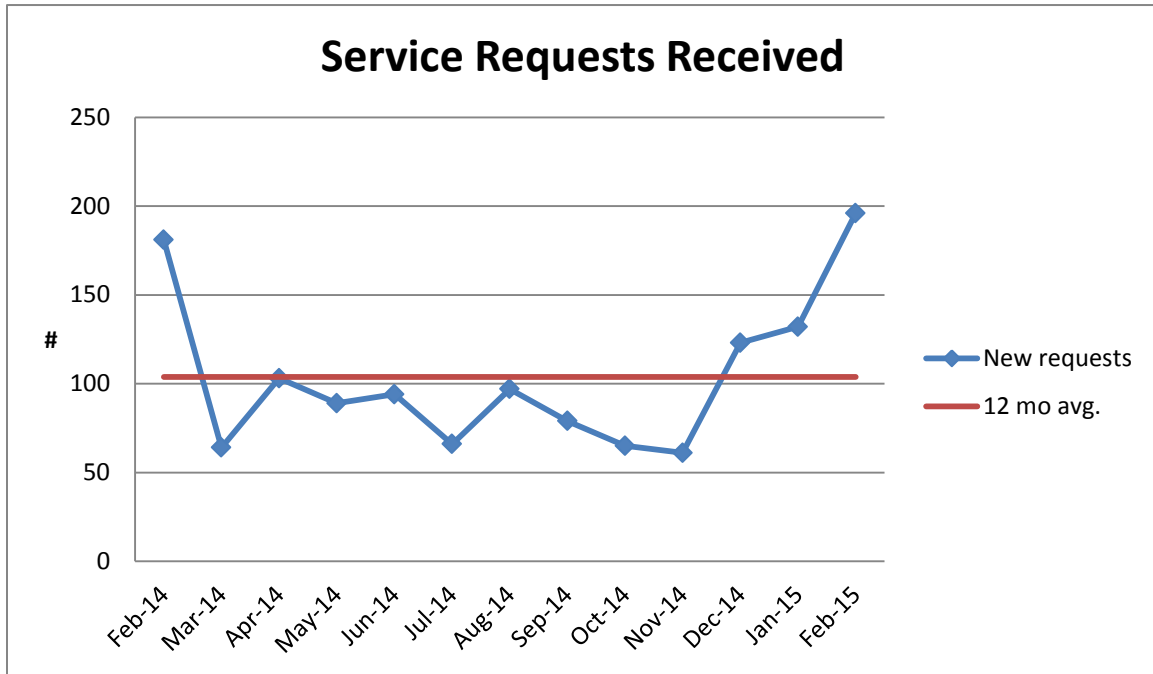
### **Highway Division**

- Responded to winter events on 9 days, received nearly 2 ft more snow than average:
  - 2<sup>nd</sup> (25-hour plow and treatment)
  - 5<sup>th</sup> (15-hour plow and treatment)
  - 8<sup>th</sup> - 10<sup>th</sup> (45-hour plow and treatment)
  - 10<sup>th</sup> (road treatment)
  - 12<sup>th</sup> (road treatment)
  - 14<sup>th</sup> (24-hour plow and treatment)
  - 18<sup>th</sup> (11-hour plow and treatment)
  - 21<sup>st</sup> (18-hour plow and treatment)
  - Total roadway material distributed:
    - 72.5 truckloads of salt
    - 172.5 truckloads of sand/salt mix
    - 7 truckloads of sand
- Plowed and prepared Wasserman Park for the Winter Carnival
- Removed snow from pedestrian ways and park parking lots between storms
- Pushed back snow banks, cleared catch basins and sight lines between storms
- Repaired or placed temporary mailboxes for those damaged by plows
- Repaired asphalt damage and potholes in several locations
- Performed vehicle maintenance and mid-season spreader adjustments



March 18, 2015

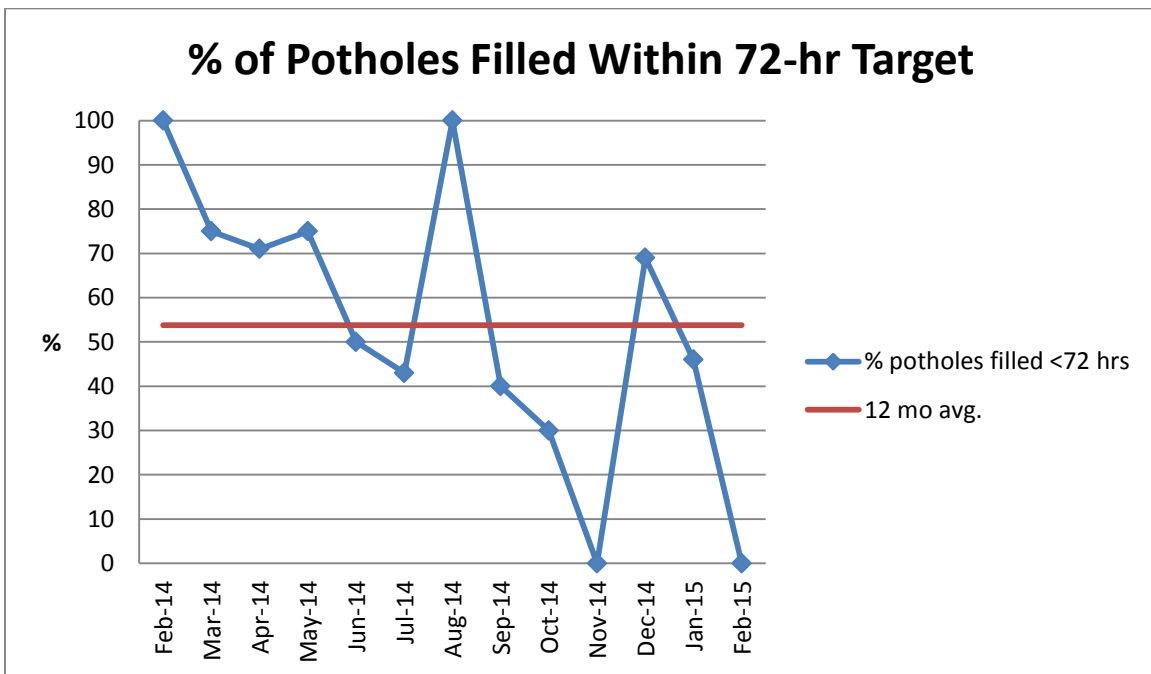
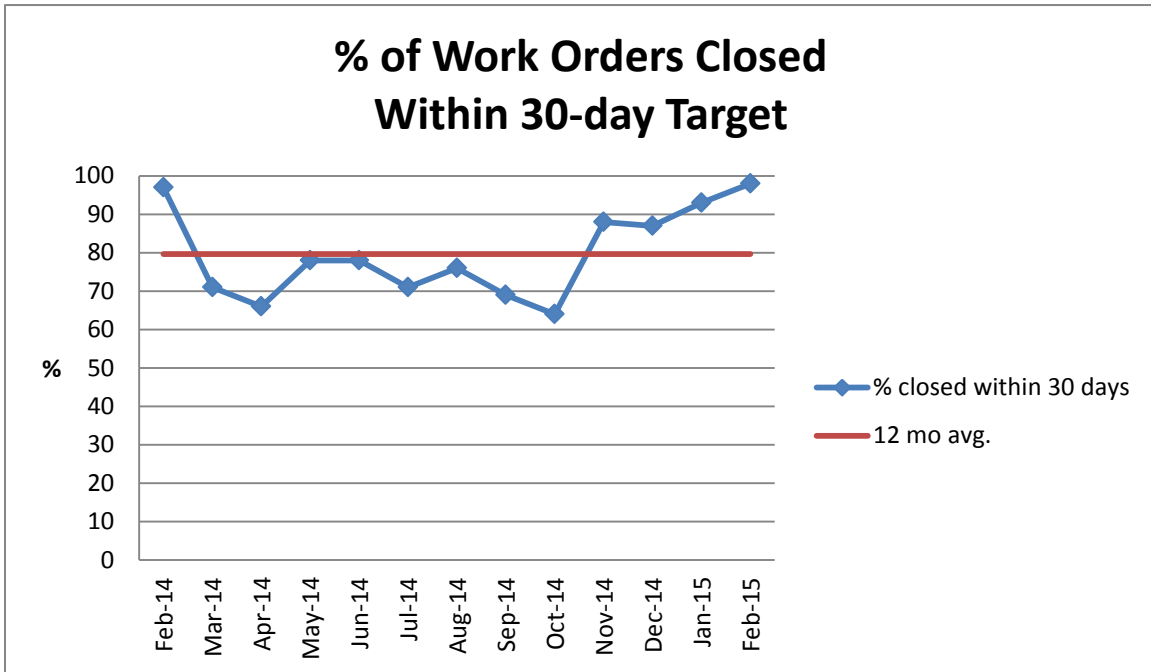
**Highway Division, continued**





March 18, 2015

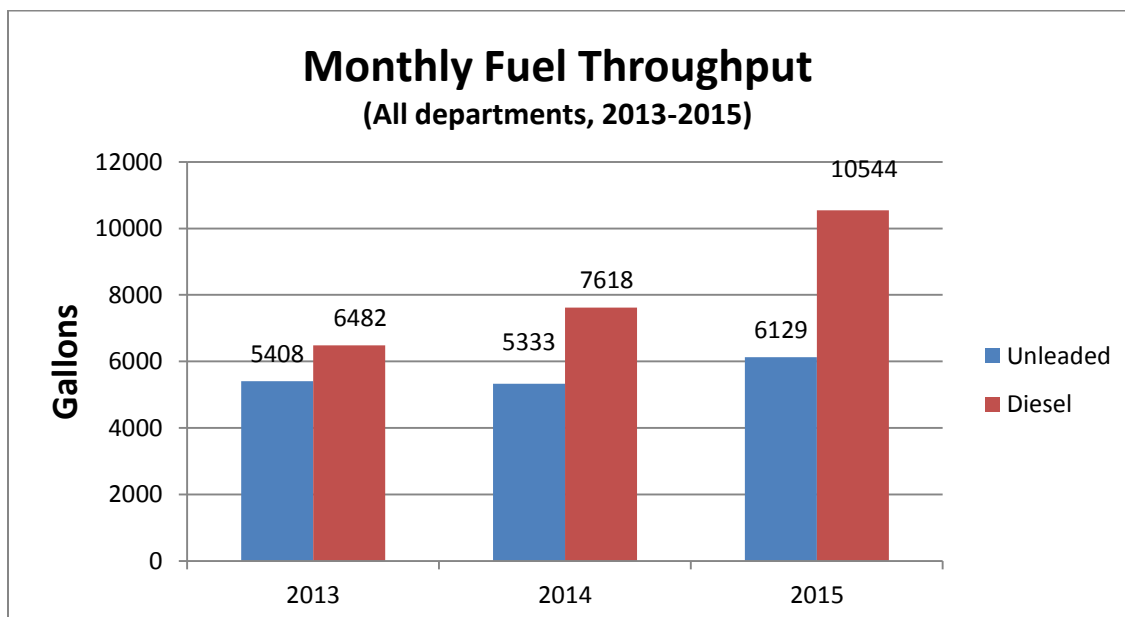
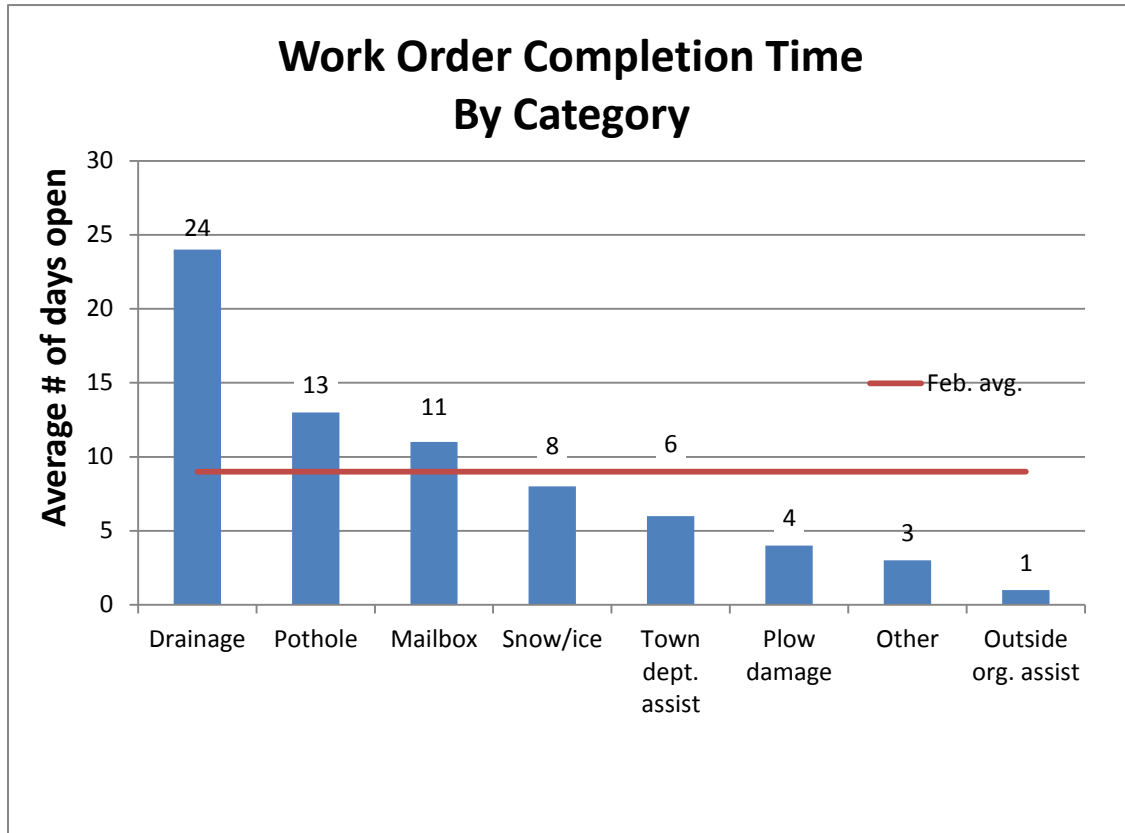
**Highway Division, continued**





March 18, 2015

**Highway Division, continued**



Monthly report  
Equipment Maintenance & Highway Divisions