

FEDERAL ENERGY REGULATORY COMMISSION  
WASHINGTON, D.C. 20426

OFFICE OF ENERGY PROJECTS

**In Reply Refer To:**

OEP/DG2E/Gas Branch 3  
Tennessee Gas Pipeline Company, LLC  
Northeast Energy Direct Project  
Docket Nos. CP16-21-000, PF14-22-000  
§ 375.308(z)

December 8, 2015

Mr. J. Curtis Moffat  
Deputy General Counsel and Vice President  
Gas Group Legal  
Tennessee Gas Pipeline Company, LLC  
1001 Louisiana Street, Suite 1000  
Houston, TX 77009

**Re: Environmental Data Request**

Mr. Moffat:

Provide the information described in the enclosure to assist in our analysis of the above-referenced certificate application. File your response in accordance with the provisions of the Commission's Rules of Practice and Procedure. In particular, 18 CFR 385.2010 (Rule 2010) requires that you serve a copy of the response to each person whose name appears on the official service list for this proceeding.

**You should file a complete response within 20 days of the date of this letter.**  
The response must be filed with the Secretary of the Commission at:

Kimberly D. Bose, Secretary  
Federal Energy Regulatory Commission  
888 First Street NE, Room 1A  
Washington, DC 20426

In addition to the information specifically required in the regulations, staff need the following information to begin preparation of the environmental impact statement for the Northeast Energy Direct Project. If the information cannot be provided in the time frame indicated, explain which items will be delayed and why, and provide a projected filing date. Also, we expect to be requesting other clarifications or information in the future.

**Once we have received your responses to this and future data requests and reviewed them for completeness, we will be able to establish a schedule for completing the EIS.**

When filing documents and maps, be sure to prepare separate volumes, as outlined on the Commission's website at <http://www.ferc.gov/resources/guides/filing-guide/file-ceii.asp>. Any Critical Energy Infrastructure Information should be filed as non-public and labeled "Contains Critical Energy Infrastructure Information-Do Not Release" (18 CFR 388.112). Cultural resources material containing location, character, or ownership information should be marked "Contains Privileged Information - Do Not Release" and should be filed separately from the remaining information, which should be marked "Public."

File all responses under oath (18 CFR 385.2005) by an authorized Tennessee Gas Pipeline Company, LLC representative and include the name, position, and telephone number of the respondent to each item.

If you have any questions, please contact me at (202) 502-8097 Thank you for your cooperation.

Eric J Tomasi

Environmental Project Manager  
Office of Energy Projects

cc: Public File, Docket Nos. CP16-21-000, PF14-22-000

All Parties

**Northeast Energy Direct Project (Project)  
Docket Nos. CP16-21-000, PF14-22-000**

**Environmental Information Request**

**General Comments**

1. At a minimum, Tennessee Gas should respond to the comments contained in the letters identified below received by FERC after the conclusion of the formal scoping period:
  - a. the Massachusetts Attorney General's Office on October 19, 2015 (letter and Appendix);
  - b. the Mascenic Regional School Board on October 20, 2015;
  - c. the Dracut Board of Selectman on October 20, 2015;
  - d. the Massachusetts Energy Facilities Siting Board on October 19, 2015;
  - e. the Town of Temple, New Hampshire on October 19, 2015;
  - f. the New Hampshire Director of Charitable Trusts on October 19, 2015;
  - g. the Town of Bloomfield, Connecticut on October 19, 2015;
  - h. the Town of Lenox, Massachusetts on October 19, 2015;
  - i. the Nashua Regional Planning Commission on October 20, 2015;
  - j. the Northern Middlesex Council of Government on October 20, 2015;
  - k. the Pelham/Windham Pipeline Awareness Outreach Subcommittee on October 21, 2015;
  - l. the Town of Town of Lynnfield, Board of Health on October 22, 2015;
  - m. the Southwest Region Planning Commission on October 22, 2015;
  - n. the National Park Service on October 23, 2015;
  - o. the New York State Department of Environmental Conservation on October 26, 2015;
  - p. the Town of Merrimack, New Hampshire on October 26, 2015;
  - q. the Audubon Society of New Hampshire filed on October 19, 2015;
  - r. Northeast Energy Solutions filed on October 30, 2015;
  - s. The Connecticut Department of Energy and Environmental Protection on November 3, 2015;
  - t. the Town of Amherst, Massachusetts on November 3, 2015;
  - u. the Mason School District on November 10, 2015;

- v. the Town of Berlin, Massachusetts on November 12, 2015;
- w. the Town of Dracut Board of Health on November 12, 2015;
- x. Northeast Energy Solutions on November 12, 2015;
- y. the City and County of Hartford, Connecticut on November 16, 2015;
- z. Millers River Watershed Council on November 19, 2015;
- aa. the Town of Conway, Massachusetts Agricultural Commission on November 20, 2015; and
- bb. the Berlin Pipeline Study Committee on November 25, 2015.

## Resource Report 10 – Alternatives

The application filed on November 20, 2015 did not fully provide adequate data for alternative comparisons. For each of the compressor station (CS) alternatives, provide the information in a table similar to the table below. In addition, provide a USGS topographical map and aerial map for each location.

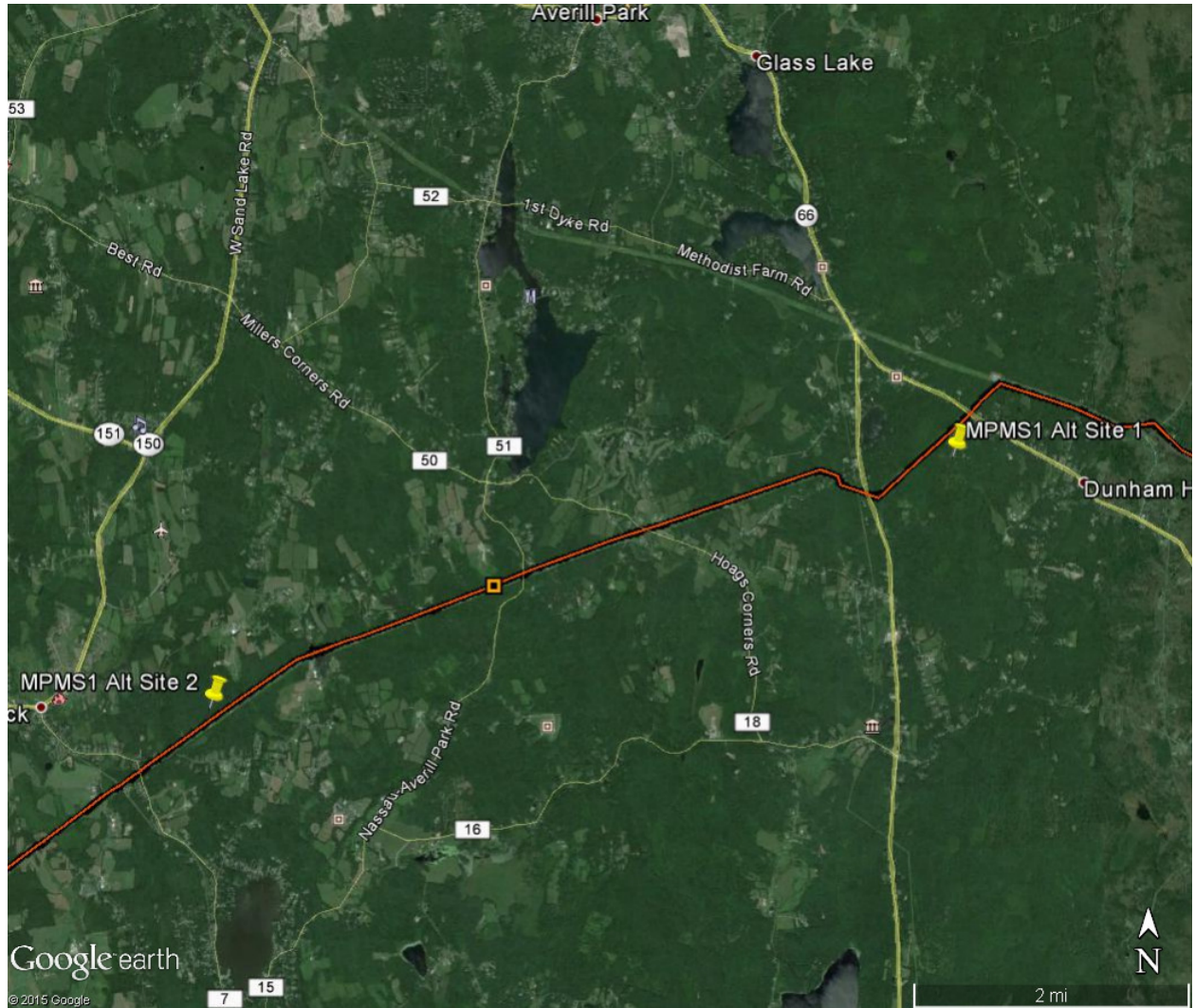
<b>Compressor Station X Alternative Analysis</b>			
	CS X Proposed Site	CS X Alt No. 1	CS X Alt No. 2
Total property size (acres)			
Operational acres			
Land use (type and acres)			
Wetland impacts by type (acres)			
Vegetation impacts by type (acres)			
Length of suction/discharge pipe			
Waterbody impacts			
Number of NSAs within ½ mile (including temp. shelters)			
Closest NSA (feet), direction			
Total horsepower of engines/turbines/motors			
Distance to sensitive receptors (school, hospital, nursing home, hospice, etc)			
Distance to park/wildlife areas			
Mines, quarries, and other geological hazards within ¼ mile			
Environmental Justice: low-income populations, minority populations, or tribal communities in county			
Access road length			
Sidehill excavation required			
Soil stabilization required			
Identified critical habitat			
Contamination – type			
Cultural Resources within ¼ mile			
Other Sensitive Resources within ¼ mile (National River Inventory waterbodies, parks, etc)			

1. Consider and fully evaluate utilizing the site alternatives for the Market Path Mid Station 1 compressor station as depicted in the attached images, as well as any other viable site alternatives that Tennessee Gas has developed independently.
2. Consider and fully evaluate utilizing the site alternatives for the proposed Market Path Mid Station 4 and Market Path Tail compressor stations as depicted in the attached images, as well as any other viable site alternatives that Tennessee Gas may develop independently.
3. Prepare additional environmental, engineering, and economic analysis of the Existing Line 200 Alternative combined with the Massachusetts Turnpike Alternative as detailed in the attached images. Provide the information as identified in our May 15, 2015 comments under Resource Report 10 - Alternatives Question No. 11.
4. Consider and fully evaluate utilizing various segments of the Massachusetts Alternative, Massachusetts Route 2 Alternative, and the Article 97 Collocation Alternative in combination to develop the most practical hybrid alternative(s). Also consider that such a configuration may have the additional benefit of reducing the length of a Fitchburg Lateral Extension. Provide the information as identified in our May 15, 2015 comments under Resource Report 10 - Alternatives Question No. 11.
5. The Supply Path Tail Station and Market Path Head Station are both located in Schoharie County, New York, within 10 miles of each other. Explain why the facilities were not located in a single facility to minimize the land use impacts. Provide information on the feasibility of combining the facility into one compressor station complex.
6. Provide alternative site locations for Market Path Mid Station 3 that would move it farther away from the New England National Scenic Trail (NET), and the NET's Richardson-Zlogar Cabin (Cabin) located on NET section 17 in Northfield, Massachusetts. In addition to the alternative analysis identified above, provide a day and nighttime visual impact comparison of the sites for the users of both the NET and the Cabin.
7. Provide an alternative analysis using the existing Line 300 through Pennsylvania, New Jersey, and New York that would meet Line 200 at or near the existing Tennessee Gas Station 261. Provide the information as identified in our May 15, 2015 comments under Resource Report 10 - Alternatives Question No. 11.
8. Consider and fully evaluate utilizing the site alternatives for the proposed Supply Path Mid Station as depicted in the attached images, as well as any other viable site alternatives that Tennessee Gas may develop independently.

9. Provide maps specifically identifying the location of all proposed and all alternative compressor station sites. Ultimately, ensure that for each of the proposed compressor stations, at least one fully viable alternative site is identified.

**Image for Alternative Question No. 1**

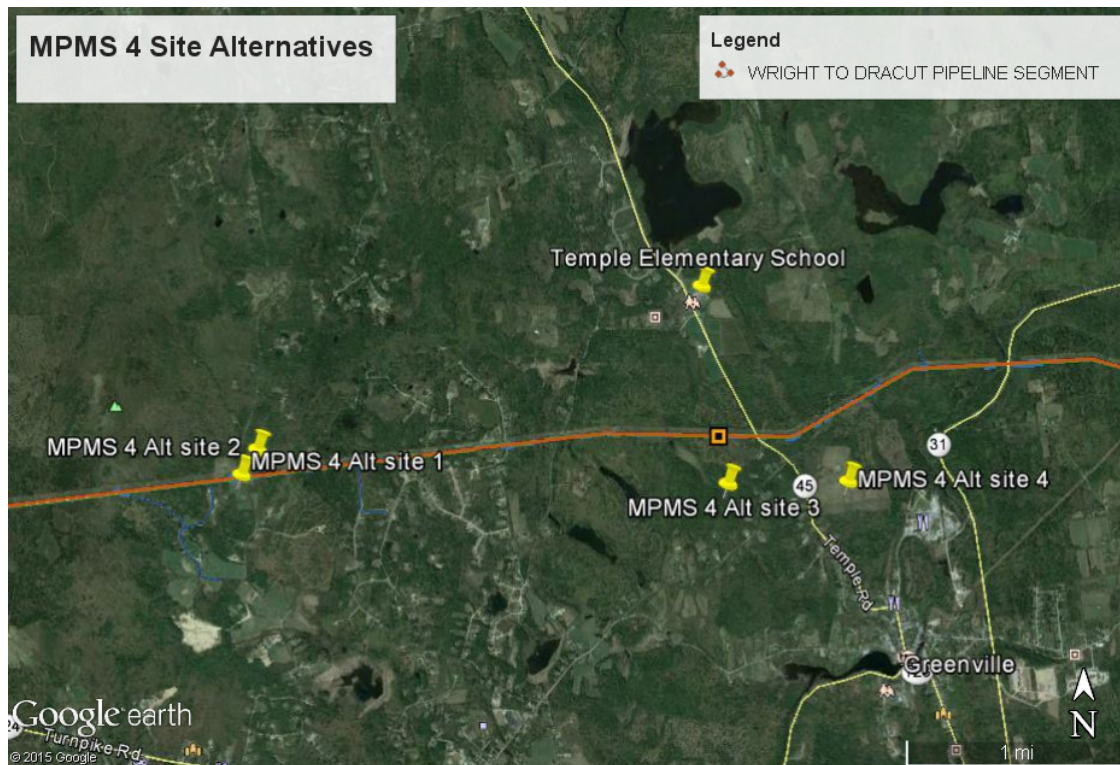
**Market Path Mid Station 1 Alternatives**





## Images for Alternative Question No. 2

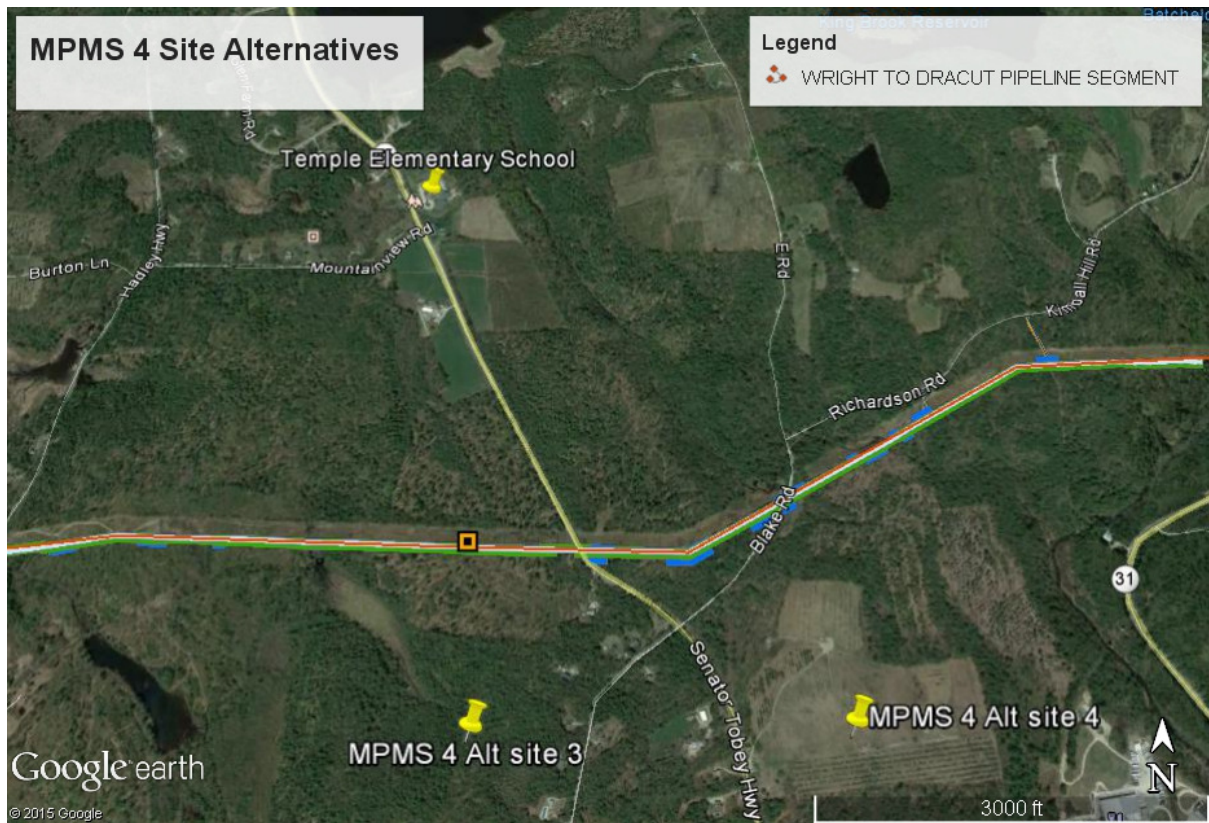
### Market Path Mid Station 4 Alternative Image 1



## Market Path Mid Station 4 Alternative Image 2

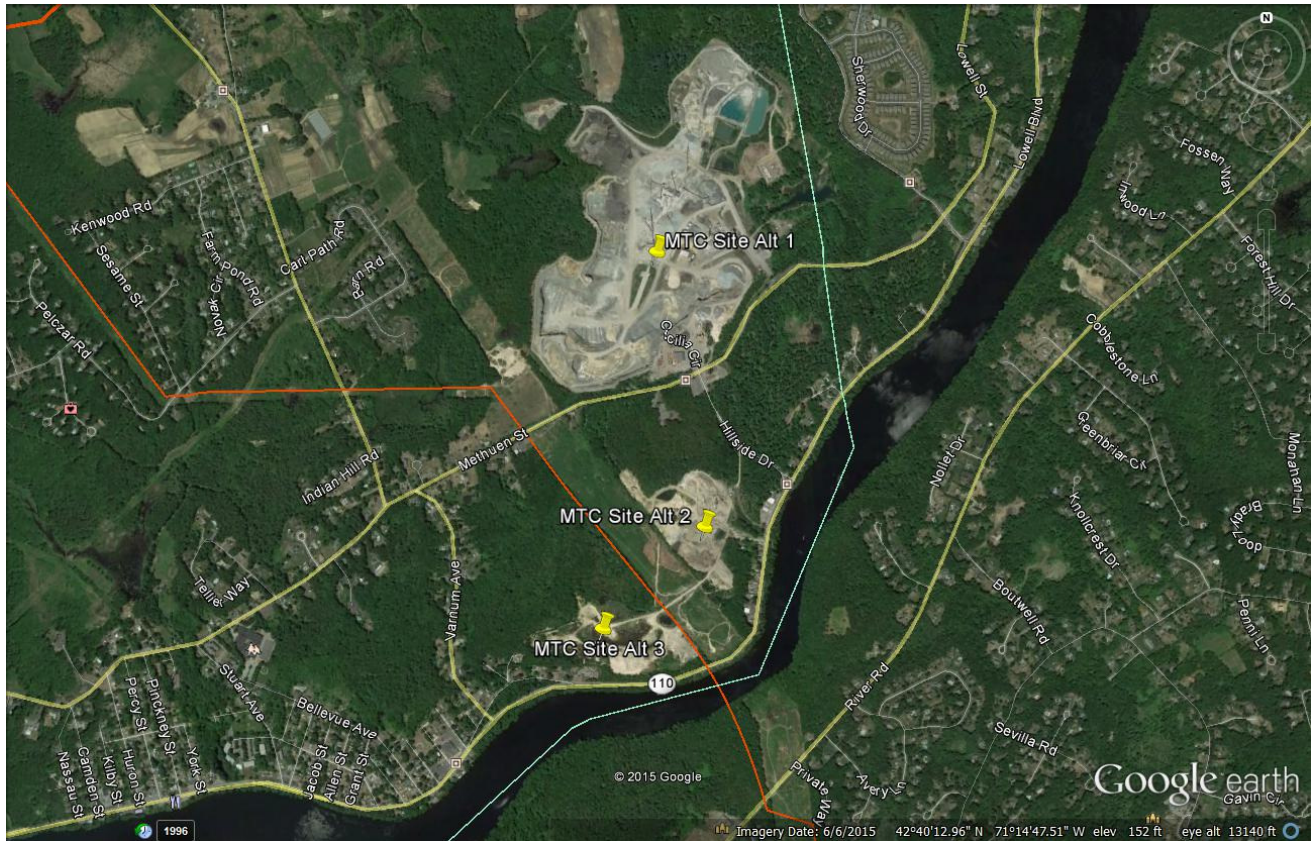


## Market Path Mid Station 4 Alternative Image 3



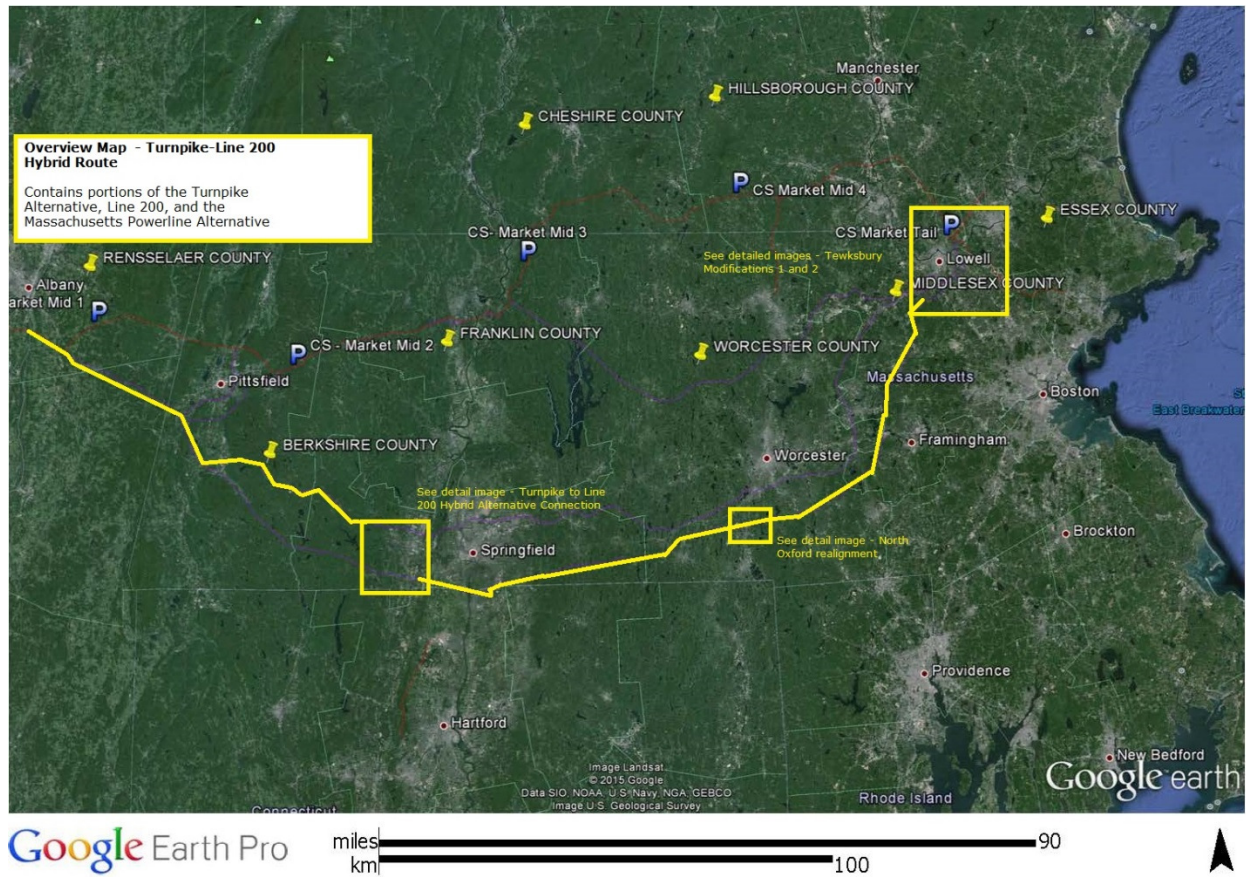


## Market Path Tail Alternative Image 1



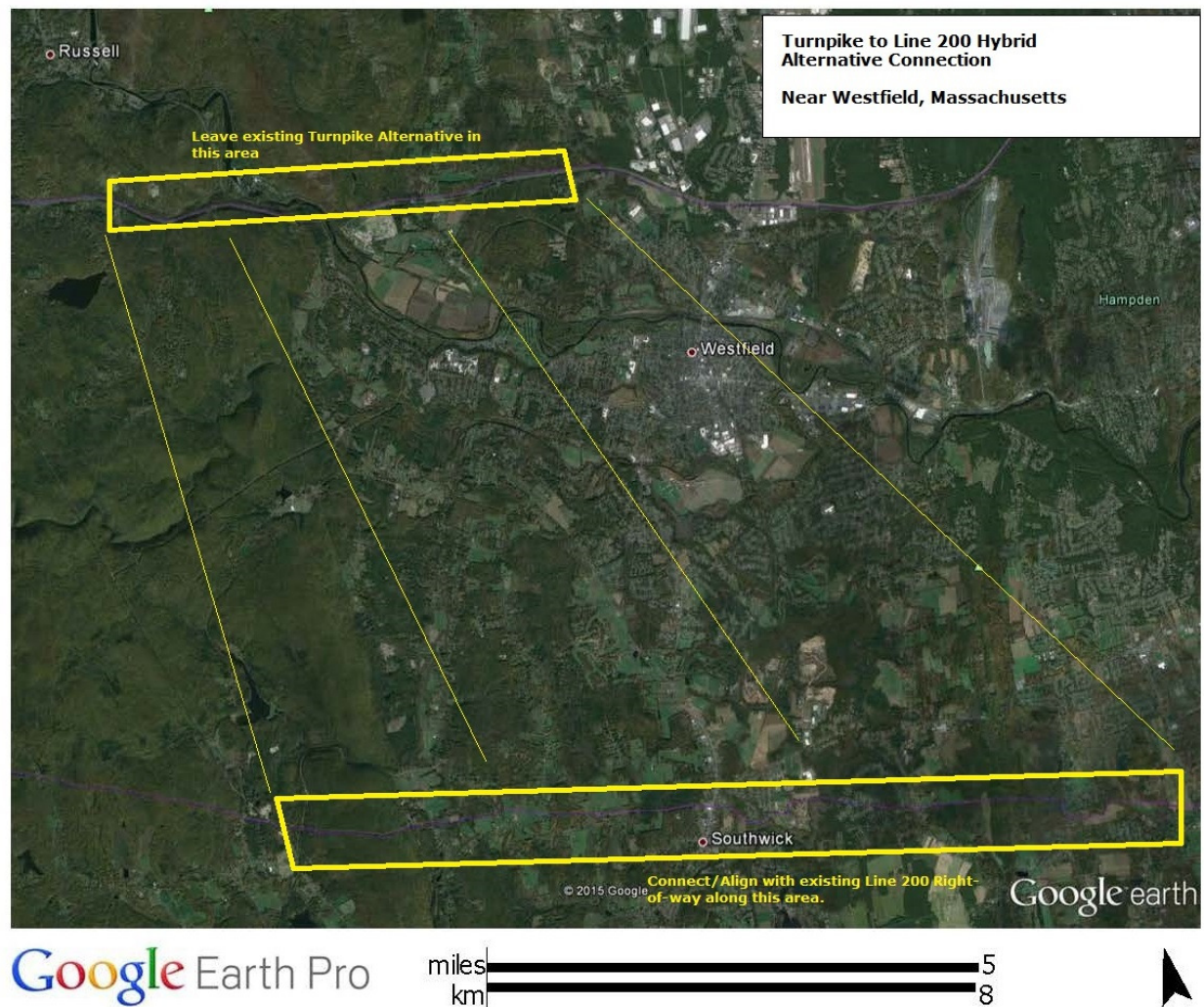
### Question 3 Images - NED Turnpike to Line 200 Hybrid Route

#### Overview Map – Turnpike-Line 200 Hybrid Route Alternative

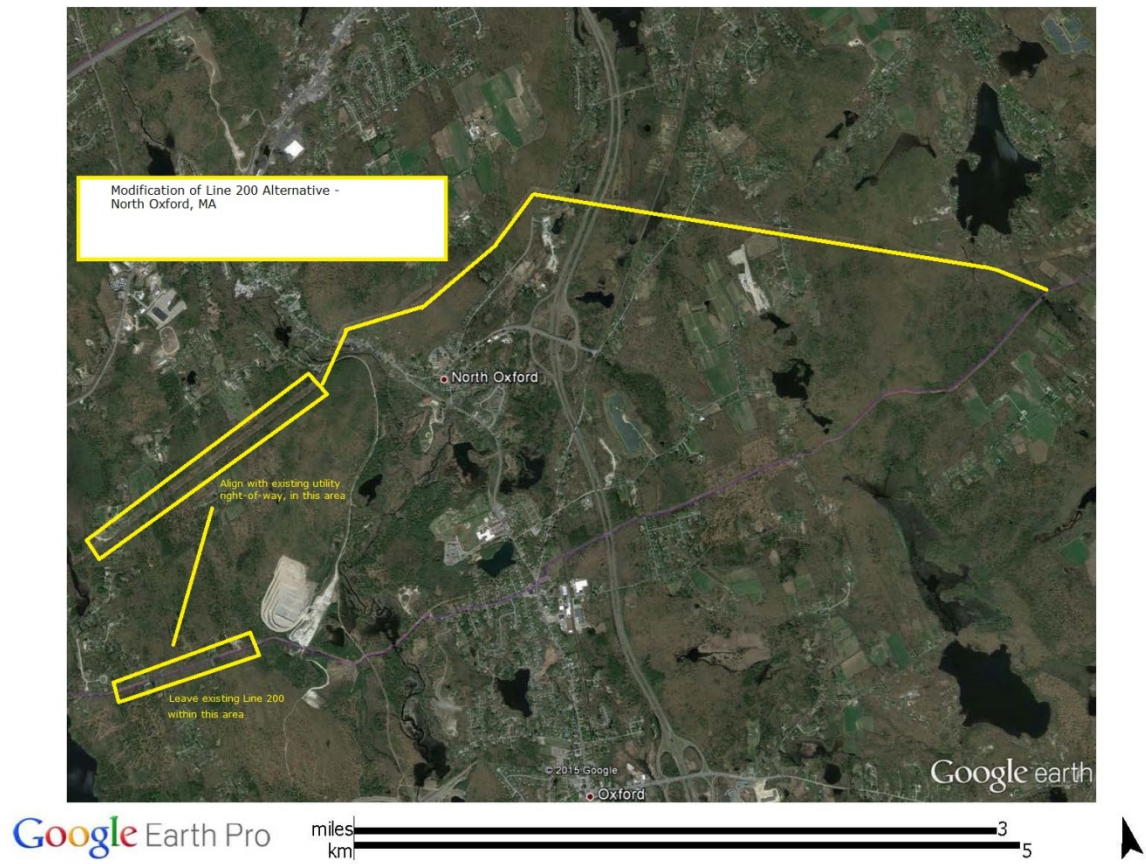




## Turnpike to Line 200 Hybrid Alternative Connection Point near Westfield, Massachusetts

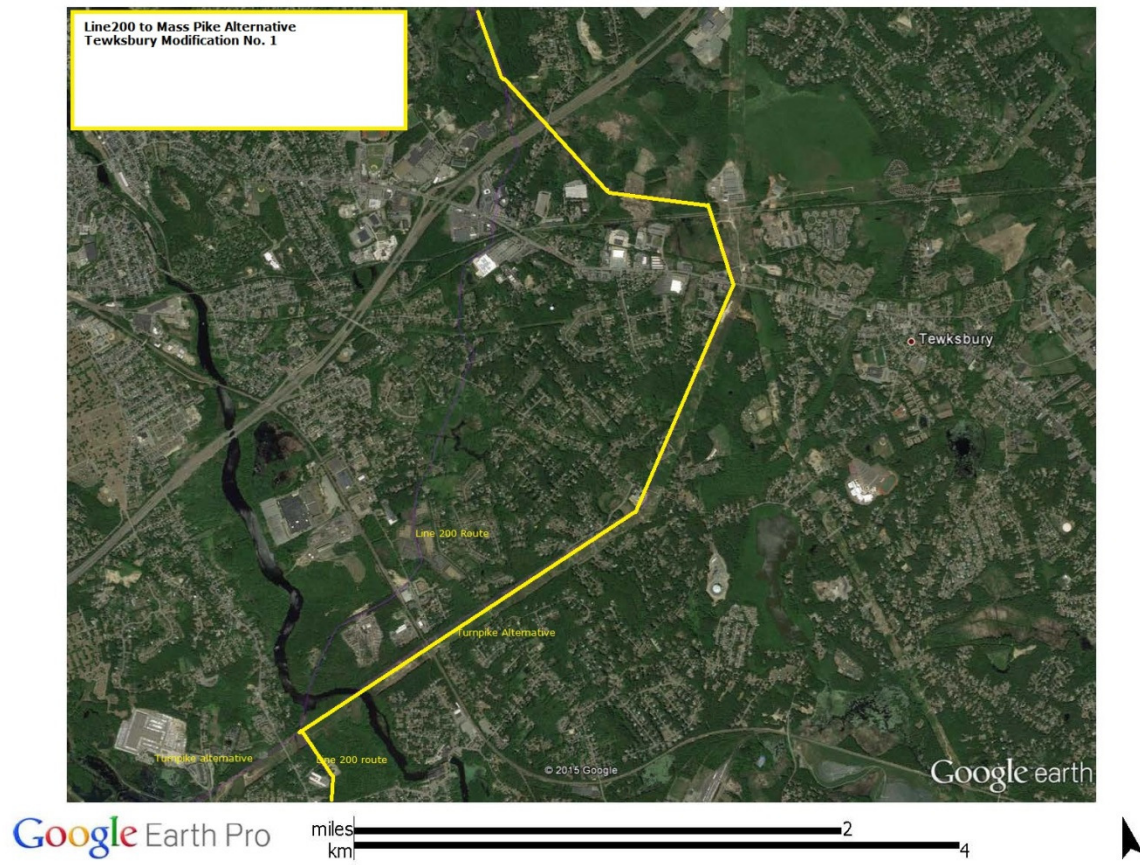


**North Oxford Realignment/Modification for the Line 200 Route/Hybrid Route  
Alternative**





## Line 200 to Turnpike Alternative Tewksbury Modification 1



Line 200 to Turnpike Alternative Tewksbury Modification 2





Images for Question 8.

Image 8a – Supply Path Mid Station FERC Alt 1

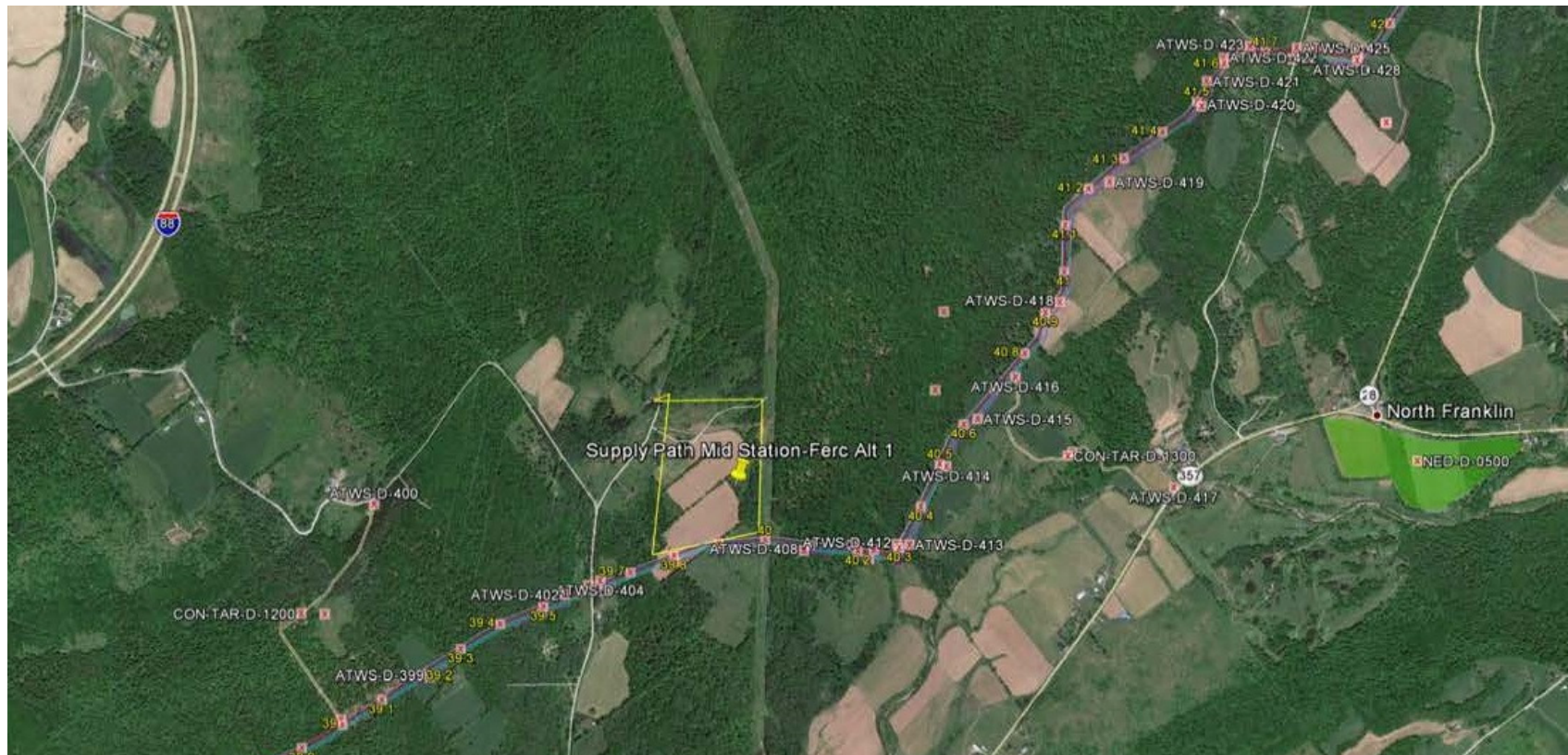


Image 8b – Supply Path Mid Station FERC Alt 2

